

# Discover

## The Dockwise Fleet



TYPE 0 ■ BLUE MARLIN ■ BLACK MARLIN ■ MIGHTY SERVANT 1 ■ MIGHTY SERVANT 3 ■ TRANSSHELF ■ TRANSPORTER ■ TREASURE ■ TALISMAN ■ TRUSTEE ■ TRIUMPH ■ TARGET ■ SWAN



Type 0 Super Vessel

# 110,000 metric tons of possibility



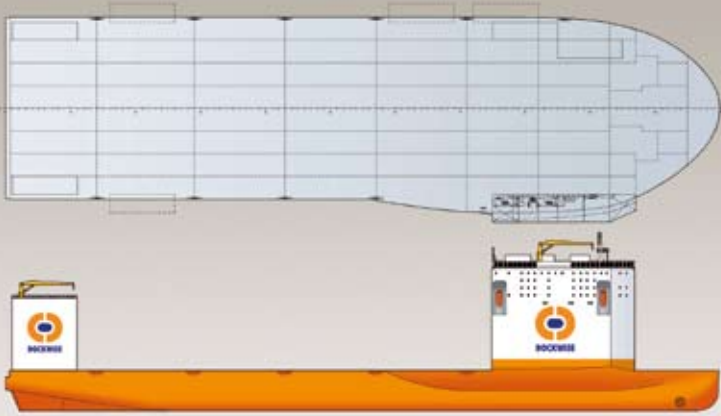
**Super Vessel** that is capable of helping clients meet their needs for bigger, integrated structures.

## Markets

- **Floating production structures:**
  - TLP (integrated with topside)
  - Semi's (integrated with topside)
  - Spar hulls
  - Gravity based production structures
- **Semi-submersible rigs**
- **FPSO's**
- **FLNG**
- **Semi-submersible crane vessels**
- **Vessel dry docking**

## Advantages

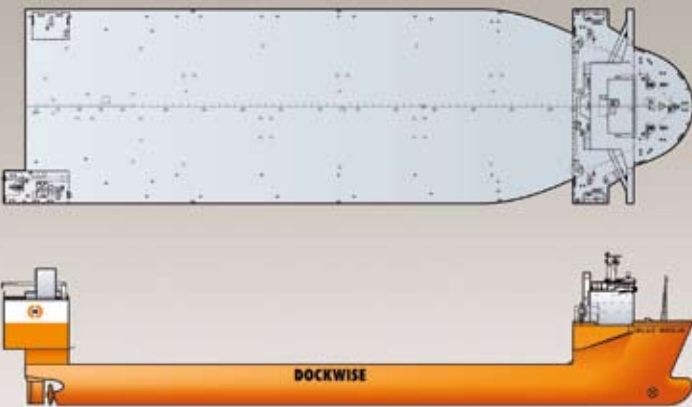
- **Safety**
  - Integrated units can be built in one single location, allowing better and safer building sequences
  - Possibility to weather route during transfer
- **Capacity**
  - Design capacity of Type 0 vessel is based on future large floating production structures and semi-submersible drilling rigs
  - Design concept allows optimum flexibility of the vessel to use it for your cargo, including long, deep draft and ultra heavy cargoes
- **Cost efficient**
  - Enables customers to meet global lowest 'cost of ownership' by fabricating in most cost effective areas
  - Eliminates offshore integration, hook-up, and commissioning



### TYPE 0 (NEW BUILD)

LENGTH O.A.	275.00 meters
LENGTH B.P.	270.00 meters
BREADTH MOULDED	70.00 meters
BREADTH MAX	78.75 meters
FREE DECK SPACE	275 x 70 meters, but no restrictions for overhang forward and aft
DEPTH	15.50 meters
DRAFT SUBMERGED	31.50 meters
SUMMER DRAFT	9.73 meters
SUMMER DRAFT (B-60)	10.52 meters
SUMMER DRAFT (B-100)	11.04 meters
WATER DEPTH ABOVE MAIN DECK	16.00 meters
DEADWEIGHT (B-100)	117,000 metric tons
EXPECTED SPEED	14 knots
CLASS	DNV

\* Equipped with movable casing



### BLUE MARLIN

LENGTH O.A.	224.80 meters
LENGTH B.P.	206.50 meters
BREADTH	63.00 meters
FREE DECK SPACE (L X B)*	178.20 x 63.00 meters
DEPTH	13.30 meters
DRAFT SUBMERGED AT FPP	24.72 meters
DRAFT SUBMERGED AT APP	28.40 meters
SUMMER DRAFT (B-100)	10.28 meters
WATER DEPTH ABOVE MAIN DECK	13.20 meters
GRT	51,821 -
NRT	15,547 -
DEADWEIGHT (B-100)	76,061 metric tons
SPEED	14.5 knots
CLASS	DNV

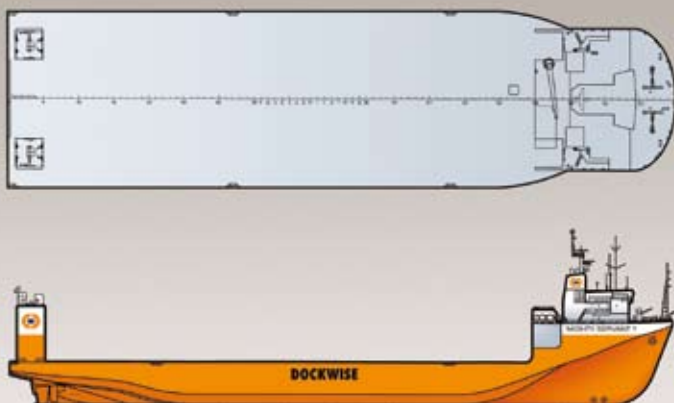
\* Equipped with fixed casing at starboard



### BLACK MARLIN

LENGTH O.A.	217.80 meters
LENGTH B.P.	206.50 meters
BREADTH	42.00 meters
FREE DECK SPACE (L X B)*	165.60 (157.20) x 42.00 meters
DEPTH	13.30 meters
DRAFT SUBMERGED	23.34 meters
SUMMER DRAFT (B-100)	10.12 meters
WATER ABOVE MAIN DECK	10.00 meters
GRT	37,938 -
NRT	11,382 -
DEADWEIGHT (B-100)	57,021 metric tons
SPEED	14.5 knots
CLASS	DNV

\* Equipped with fixed casing at starboard



### MIGHTY SERVANT 1

LENGTH O.A.	190.03 meters
LENGTH B.P.	174.70 meters
BREADTH	50.00 meters
FREE DECK SPACE (L X B)*	150.00 x 50.00 meters
DEPTH	12.00 meters
DRAFT SUBMERGED AT FRAME 60	22.30 meters
DRAFT SUBMERGED AT APP	26.00 meters
SUMMER DRAFT	8.79 meters
SUMMER DRAFT (B-60)	9.11 meters
SUMMER DRAFT (B-100)	9.32 meters
WATER ABOVE MAIN DECK	12.00 meters
GRT	29,193 -
NRT	8,557 -
DEADWEIGHT (B-100)	45,402 metric tons
SPEED	15 knots
CLASS	LR

\* Equipped with movable casings



### MIGHTY SERVANT 3

LENGTH O.A.	180.00 meters
LENGTH B.P.	165.70 meters
BREADTH	40.00 meters
FREE DECK SPACE (L X B)*	140.00 x 40.00 meters
DEPTH	12.00 meters
DRAFT SUBMERGED	22.00 meters
SUMMER DRAFT	9.06 meters
SUMMER DRAFT (B-60)	9.33 meters
SUMMER DRAFT (B-100)	9.51 meters
WATER DEPTH ABOVE MAIN DECK	10.00 meters
GRT	22,391 -
NRT	6,717 -
DEADWEIGHT (B-100)	27,720 metric tons
SPEED	15 knots
CLASS	LR

\* Equipped with movable casings



### TRANSSHelf

LENGTH O.A.	173.60 meters
LENGTH B.P.	162.00 meters
BREADTH	40.00 meters
FREE DECK SPACE (L X B)*	132.00 x 40.00 meters
DEPTH	12.00 meters
DRAFT SUBMERGED	22.00 meters
SUMMER DRAFT (B)	8.80 meters
SUMMER DRAFT (B-60)	9.07 meters
SUMMER DRAFT (B-100)	9.25 meters
WATER ABOVE MAIN DECK	9.00 meters
GRT	26,547 -
NRT	7,964 -
DEADWEIGHT (B-100)	36,828 metric tons
SPEED	15.5 knots
CLASS	LR

\* Equipped with fixed casing at starboard



### TRANSPORTER

LENGTH O.A.	216.86 meters
LENGTH B.P.	207.93 meters
BREADTH	45.00 meters
FREE DECK SPACE (L X B)	130 x 44.50 meters
DEPTH	14.00 meters
DRAFT SUBMERGED	23.00 meters
SUMMER DRAFT	10.44 meters
WATER ABOVE MAIN DECK	9.00 meters
GRT	42,609 -
NRT	12,783 -
DEADWEIGHT	54,240 metric tons
SPEED	15 knots
CLASS	DNV



### TREASURE

LENGTH O.A.	216.79 meters
LENGTH B.P.	207.93 meters
BREADTH	45.00 meters
FREE DECK SPACE (L X B)	130 x 44.50 meters
DEPTH	14.00 meters
DRAFT SUBMERGED	23.00 meters
SUMMER DRAFT	10.43 meters
WATER ABOVE MAIN DECK	9.00 meters
GRT	42,609 -
NRT	12,783 -
DEADWEIGHT	53,868 metric tons
SPEED	15 knots
CLASS	DNV



## TALISMAN

LENGTH O.A.	216.79 meters
LENGTH B.P.	207.93 meters
BREADTH	45.00 meters
FREE DECK SPACE (L X B)	130 x 44.50 meters
DEPTH	14.00 meters
DRAFT SUBMERGED	23.00 meters
SUMMER DRAFT	10.43 meters
WATER ABOVE MAIN DECK	9.00 meters
GRT	42,609 -
NRT	12,783 -
DEADWEIGHT	53,868 metric tons
SPEED	15 knots
CLASS	DNV



## TRUSTEE

LENGTH O.A.	216.79 meters
LENGTH B.P.	207.93 meters
BREADTH	45.00 meters
FREE DECK SPACE (L X B)	130 x 44.50 meters
DEPTH	14.00 meters
DRAFT SUBMERGED	23.00 meters
SUMMER DRAFT	10.43 meters
WATER ABOVE MAIN DECK	9.00 meters
GRT	42,609 -
NRT	12,783 -
DEADWEIGHT	53,868 metric tons
SPEED	15 knots
CLASS	DNV



## TRIUMPH

LENGTH O.A.	216.79 meters
LENGTH B.P.	207.93 meters
BREADTH	45.00 meters
FREE DECK SPACE (L X B)	130 x 44.50 meters
DEPTH	14.00 meters
DRAFT SUBMERGED	23.00 meters
SUMMER DRAFT	10.43 meters
WATER ABOVE MAIN DECK	9.00 meters
GRT	42,609 -
NRT	12,783 -
DEADWEIGHT	53,868 metric tons
SPEED	15 knots
CLASS	DNV



## TARGET

LENGTH O.A.	216.79 meters
LENGTH B.P.	207.93 meters
BREADTH	45.00 meters
FREE DECK SPACE (L X B)	130 x 44.50 meters
DEPTH	14.00 meters
DRAFT SUBMERGED	23.00 meters
SUMMER DRAFT	10.43 meters
WATER ABOVE MAIN DECK	9.00 meters
GRT	42,609 -
NRT	12,783 -
DEADWEIGHT	53,868 metric tons
SPEED	15 knots
CLASS	DNV



## SWAN

LENGTH O.A.	180.96 meters
LENGTH B.P.	170.95 meters
BREADTH	32.26 meters
FREE DECK SPACE (L X B)	126.60 x 31.66 meters
DEPTH	13.30 meters
DRAFT SUBMERGED AT FPP	19.64 meters
DRAFT SUBMERGED AT APP	21.65 meters
SUMMER DRAFT	9.46 meters
WATER ABOVE MAIN DECK	7.30 meters
GRT	22,788 -
NRT	9,531 -
DEADWEIGHT	29,860 metric tons
SPEED	16 knots
CLASS	DNV



## SWIFT

LENGTH O.A.	180.82 meters
LENGTH B.P.	170.95 meters
BREADTH	32.26 meters
FREE DECK SPACE (L X B)	126.60 x 31.70 meters
DEPTH	13.30 meters
DRAFT SUBMERGED AT FPP	19.64 meters
DRAFT SUBMERGED AT APP	21.65 meters
SUMMER DRAFT	9.49 meters
WATER ABOVE MAIN DECK	7.30 meters
GRT	22,835 -
NRT	9,573 -
DEADWEIGHT	32,187 metric tons
SPEED	15 knots
CLASS	DNV



## TERN

LENGTH O.A.	180.96 meters
LENGTH B.P.	170.95 meters
BREADTH	32.26 meters
FREE DECK SPACE (L X B)	126.60 x 31.66 meters
DEPTH	13.30 meters
DRAFT SUBMERGED AT FPP	19.64 meters
DRAFT SUBMERGED AT APP	21.65 meters
SUMMER DRAFT	9.46 meters
WATER ABOVE MAIN DECK	7.30 meters
GRT	22,788 -
NRT	9,531 -
DEADWEIGHT	32,650 metric tons
SPEED	16 knots
CLASS	DNV



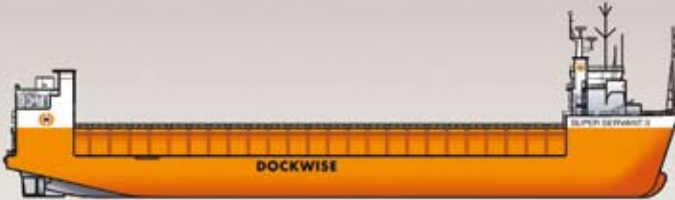
## TEAL

LENGTH O.A.	180.94 meters
LENGTH B.P.	170.95 meters
BREADTH	32.26 meters
FREE DECK SPACE (L X B)	126.60 x 31.70 meters
DEPTH	13.30 meters
DRAFT SUBMERGED AT FPP	19.64 meters
DRAFT SUBMERGED AT APP	21.65 meters
SUMMER DRAFT	9.49 meters
WATER ABOVE MAIN DECK	7.30 meters
GRT	22,835 -
NRT	9,573 -
DEADWEIGHT	32,101 metric tons
SPEED	15 knots
CLASS	DNV



## YACHT EXPRESS

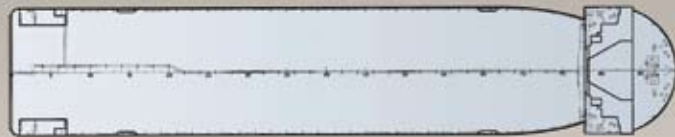
LENGTH O.A.	209.03 meters
LENGTH B.P.	191.88 meters
BREADTH	32.20 meters
FREE DECK SPACE (L X B)	165 x 30.60 meters (entrance 27.20m)
DEPTH	8.50 meters
DRAFT SUBMERGED	17.00 meters
SUMMER DRAFT	5.94 meters
WATER DEPTH ABOVE MAIN DECK	8.5 meters
GRT	17,951 -
NRT	5,386 -
DEADWEIGHT	9,400 metric tons
SPEED	18 knots
CLASS	DNV



## SUPER SERVANT 3

LENGTH O.A.	139.09 meters
LENGTH B.P.	130.00 meters
BREADTH	32.00 meters
FREE DECK SPACE (L X B)	116 x 32 meters (entrance 23,68m)
DEPTH	8.50 meters
DRAFT SUBMERGED	14.50 meters
SUMMER DRAFT	6.26 meters
WATER DEPTH ABOVE MAIN DECK	6.00 meters
GRT	10,224 -
NRT	3,067 -
DEADWEIGHT	14,138 metric tons
SPEED	14 knots
CLASS	ABS

\* Equipped with fixed casings



## SUPER SERVANT 4

LENGTH O.A.	169.49 meters
LENGTH B.P.	160.00 meters
BREADTH	32.00 meters
FREE DECK SPACE (L X B)	116 x 32 meters (entrance 23,68m)
DEPTH	8.50 meters
DRAFT SUBMERGED	14.50 meters
SUMMER DRAFT	5.38 meters
WATER DEPTH ABOVE MAIN DECK	6.00 meters
GRT	12,642 -
NRT	3,792 -
DEADWEIGHT	14,059 metric tons
SPEED	13 knots
CLASS	ABS

\* Equipped with fixed casings



SWIFT ■ TERN ■ TEAL ■ YACHT EXPRESS ■ SUPER SERVANT 3 ■ SUPER SERVANT 4 ■ TYPE 0 ■ BLUE MARLIN ■ BLACK MARLIN ■ MIGHTY SERVANT 1 ■ MIGHTY SERVANT 3 ■ TRANSSHelf



**[WWW.DOCKWISE.COM](http://WWW.DOCKWISE.COM)**